

Social and Emotional Support and Delay of Subsequent Pregnancy

**Pat Mosen, Ph.D., Holly Ruch-Ross, Sc.D.
and Suzanne McLone, M.P.H.**

Presented at the **American Public Health Association Annual Meeting**

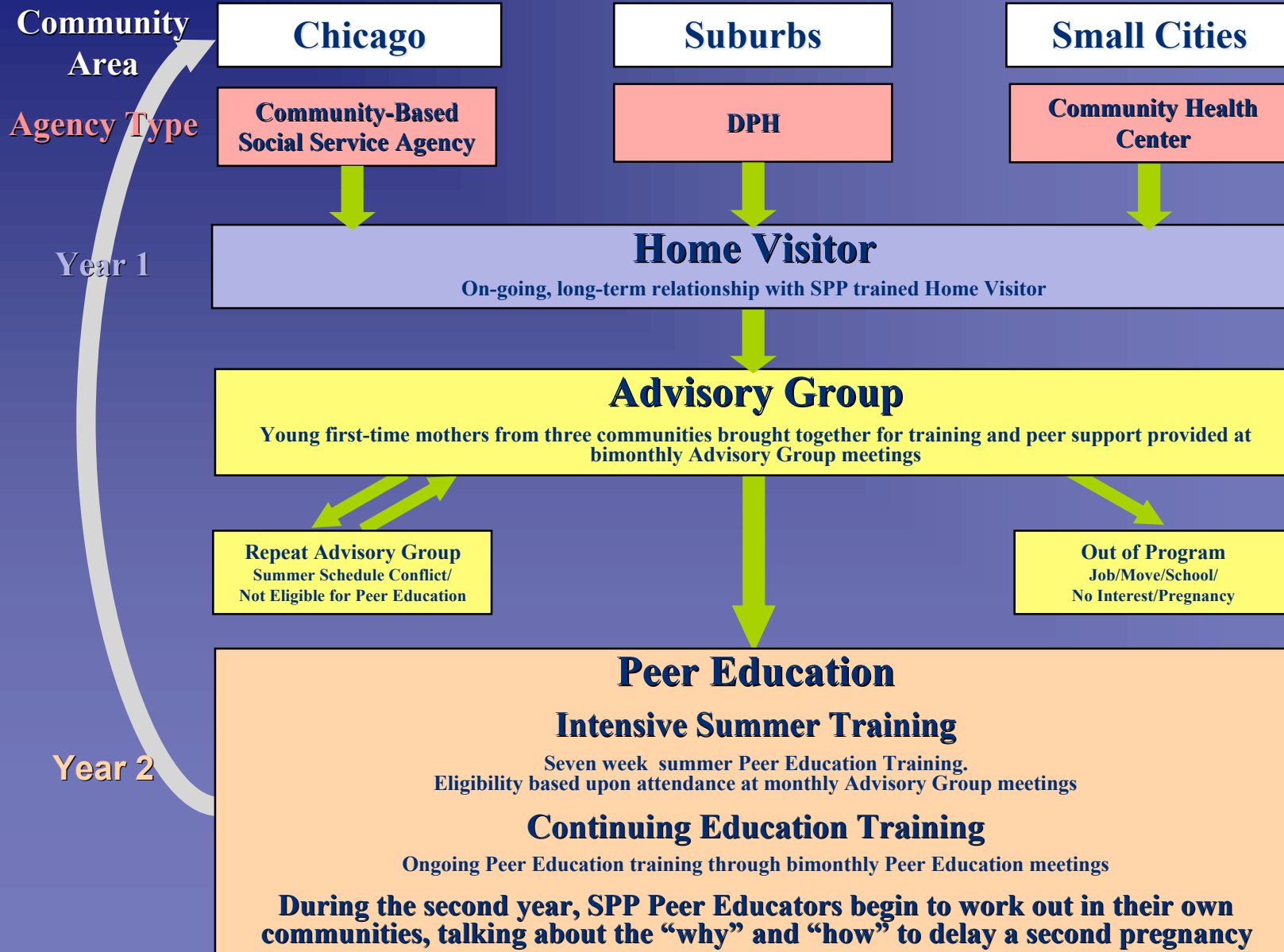
Philadelphia, Pennsylvania

November 7-11, 2009

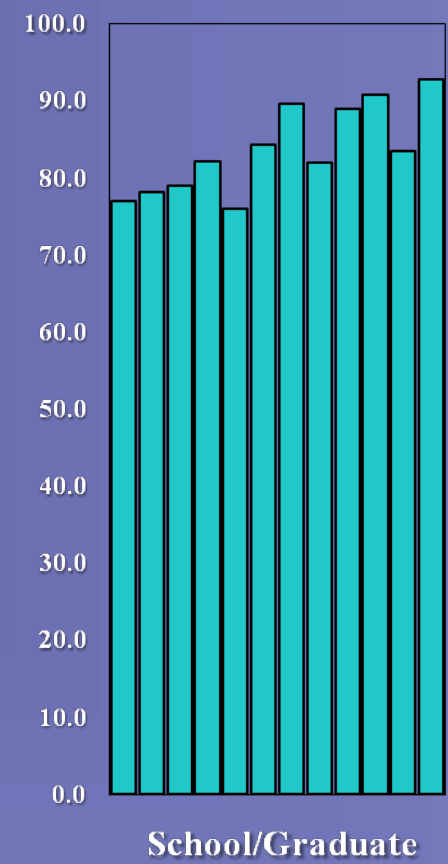
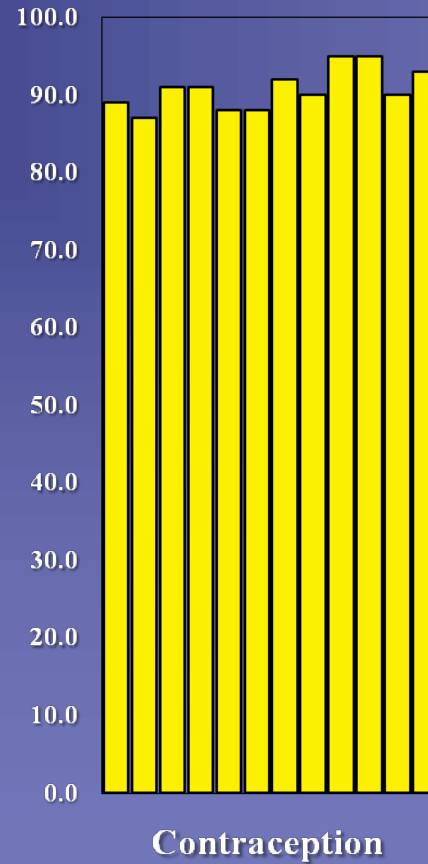
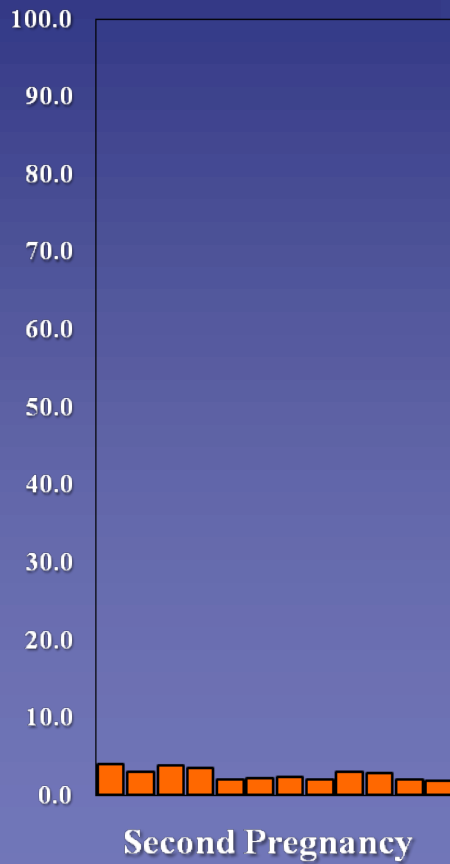
The Illinois Subsequent Pregnancy Program

- A community-based program to delay second pregnancies among adolescent mothers
- Supported by Illinois Department of Human Services
- Begun as pilot project in Chicago 1990, implemented statewide 1994 –2009.
- Program Goals:
 1. Delay a second pregnancy
 2. Use contraception correctly and consistently
 3. Remain in and graduate from high school
- Of the nearly 4,000 young mothers who have participated in ISPP:
 - 3% experienced a second pregnancy
 - 85% graduated/remained in school

Subsequent Pregnancy Program Model™



ISPP Participant Outcomes 1996-2007



Rationale for Analysis

- In an effort to identify factors related to these successful outcomes over time, the impact of participants' levels and sources of social and emotional support were investigated
- Social/Emotional support has been identified as an important factor for a successful transition to motherhood for adolescent mothers in the literature
- Social and emotional support variables are potential tools that could be used to assist ISPP Home Visitors in assessing individual participants' needs at program entry

Methods

Data Collection

- Single-year program data: 2001-2008
- First-year participants
- Time points: Baseline and year-end; monthly throughout program year

Forms - Completed by Home Visitor

- Intake Form: Program intake
- Checklist: Program intake AND year end or upon exiting program
- Exit Form: Upon program exit
- Home Visitor Contact Logs: Monthly
- Group Meeting Attendance Record: Bi-monthly

Software

- SPSS 16.0
- Epi Info, version 3.5 (www.cdc.gov/epiinfo)

Social and Emotional Support at Intake

- Who provides the most social support to the participant? (Who is always there for her?) *Check All That Apply*
 - Participant's mother
 - Father of participant's baby

- How would [the ISPP HV] rate the level of social/emotional support for this participant within her family?

- How would [the ISPP HV] rate the level of social/emotional support for this participant by her child's father?
 1. Very good, consistent support
 2. Mixed or inconsistent support
 3. No support

Program Exposure

➤ Individual Home Visitor Contacts

- Includes individual contact during home visits, at school at clinics and by phone home visits,
- Contact information includes the date, length of time and type of contact
- Data collection continuous

➤ Advisory Group Meetings

- Information includes date, attendance and curriculum topic
- Data collection occurs bi-monthly

Year-End Outcomes

School

- Is the participant in school or has graduated from high school? (Y/N)

Contraceptive Use: *Combination of Three Questions*

- Participant DID NOT have unprotected sex in previous month (Y/N)
- Participant used her method of contraception correctly (Y/N)
- Participant used a condom the last time she had sex (Y/N)

Repeat Pregnancy

- Participant had a second pregnancy while in the program (Y/N)

Participant Characteristics

N=1407

	<u>n</u>	<u>%</u>
First-Year Participants by Program Year (N=1407)		
2000-2001	275	19.5
2001-2002	169	12.0
2002-2003	186	13.2
2003-2004	138	9.8
2004-2005	139	9.9
2005-2006	208	14.8
2006-2007	159	11.3
2007-2008	133	9.5
Participant Ethnicity (n=1309)		
African American	752	57.4
Mexican/ Mexican American	342	26.1
Caucasian	84	6.4
Puerto Rican	62	4.8
Other (Includes Bi- or Multi-Ethnic)	69	5.3

Participant Characteristics

N=1407

	n	%
Participant Status at Intake (n=1364)		
Parenting	654	47.9
Pregnant	710	52.1
Mean Age of Mother at Intake, Years (n=1192)		
Mean (Range)	16.3	(12 to 20)
Age of Baby at Intake, Months (n=555)		
Mean (Range)	6.2	(<1 to 49)

Sources of Social and Emotional Support at Intake

N=1407

		n	%
Social Support is Provided By Participant's Mother (n=1338)	Yes	939	70.2
	No	399	29.8
Social Support is Provided by Father of Participant's Baby (n=1338)	Yes	327	24.4
	No	1011	75.6
Level of Social/Emotional Support for Participant "Very Good/Consistent"			
...within Participant's Family (n=1317)		1003	76.2
...by Father of Participant's Baby (n=1316)		637	38.4

Program Exposure n=1338

Home Visitor Individual Contacts

Total	23,638
Mean Number of Contacts Per Participant	17.7
Median	14.0

Group Meetings (n=732)

Total	6,369
Mean Number of Group Meetings Attended	8.7
Median	7.0

Home Visitor Contacts AND Group Meetings	711 (53.1%)
Home Visitor Contacts Only	627 (46.9%)

Year-End Outcomes (June)

N=1407

	<u>n</u>	<u>%</u>
In school or graduated from school (n=1263)	1066	84.4
Participant answered YES to all three contraception questions at end of program year (n=1196)	690	57.7
Participant experienced a second pregnancy while in program (N=1407*)	44	3.1

*Pregnancy status of all 1407 participants is known at year-end or at time of program exit

Logistic Regression Model

n=1004

<i>Model</i>	<i>Contraception Use at Year-End (Y/N)</i>	
	<i>Exp (β)</i>	<i>95.0% C.I.</i>
<u>Contraception Use at Intake</u>	<u>6.28***</u>	<u>4.44 – 8.87</u>
<u>Support from FOB Rated as “High”</u>	<u>1.34*</u>	<u>1.00-1.80</u>
<u>Number HV Contacts</u>	<u>1.03***</u>	<u>1.02-1.04</u>
HV Contacts and Group (vs. No Group)	1.04	0.77-1.40
<u>African American</u>	<u>1.72*</u>	<u>1.14-2.61</u>
Mexican /Mexican American	0.66	0.42-1.05
Participant Pregnant at Intake (vs. Parenting)	0.81	0.60-1.08
Likelihood Ratio χ^2 (<i>df</i> =7) 232.22***		

Significance levels: *** p<0.001; **p<0.01; * p<0.05

Logistic Regression Model

n=1081

<i>Model</i>	<i>Exp (β)</i>	<i>95.0% C.I.</i>
<u>In School or Graduated at Intake</u>	<u>17.50***</u>	<u>10.92-28.05</u>
<u>Participant's Mother Source of Social Support</u>	<u>2.23***</u>	<u>1.48-3.34</u>
Number HV Contacts	1.01	0.99-1.03
HV Contacts and Group (vs. No Group)	1.12	0.73-1.71
African American	1.63	0.91-2.92
Mexican /Mexican American	0.71	0.38-1.30
Participant Pregnant at Intake (vs. Parenting)	1.21	0.82-1.80
Likelihood Ratio χ^2 (df=7) 232.67***		

Significance levels: *** p<0.001; **p<0.01; * p<0.05

Key Findings

- ◆ A high rating of social/emotional support by the father of the baby is related to use of contraception by the participant
- ◆ The mother being a source of social support is related to the participant remaining in or graduating from school
- ◆ No correlations were discovered between social/emotional variables and subsequent pregnancy, most likely due to the very small number of subsequent pregnancies (n=44)

Conclusions

- ◆ ISPP participants' contraception use and school status are factors which directly relate to ISPP's primary goal:
 - ❖ delay of a second pregnancy.

- ◆ These data suggest that:
 - ❖ High social/emotional support by the father of the baby positively affects a participant's contraceptive use
 - ❖ The mother as a key source of social support positively affects a participant's school status

- ◆ Knowing social and emotional support sources/levels is a potential tool in assessing participants' needs at program entry and identifying high risk for a second pregnancy

Contact Information

Pat W. Mosen, Ph.D., *Program Director*

5646 South Kimbark

Chicago, Illinois 60615

773.288.1620

mosen@aol.com

Deborah Steele, *Program Manager*

3932 West Madison, 2nd Floor

Chicago, Illinois 60624

773.722.1178, ext. 250

stede@sinai.org